

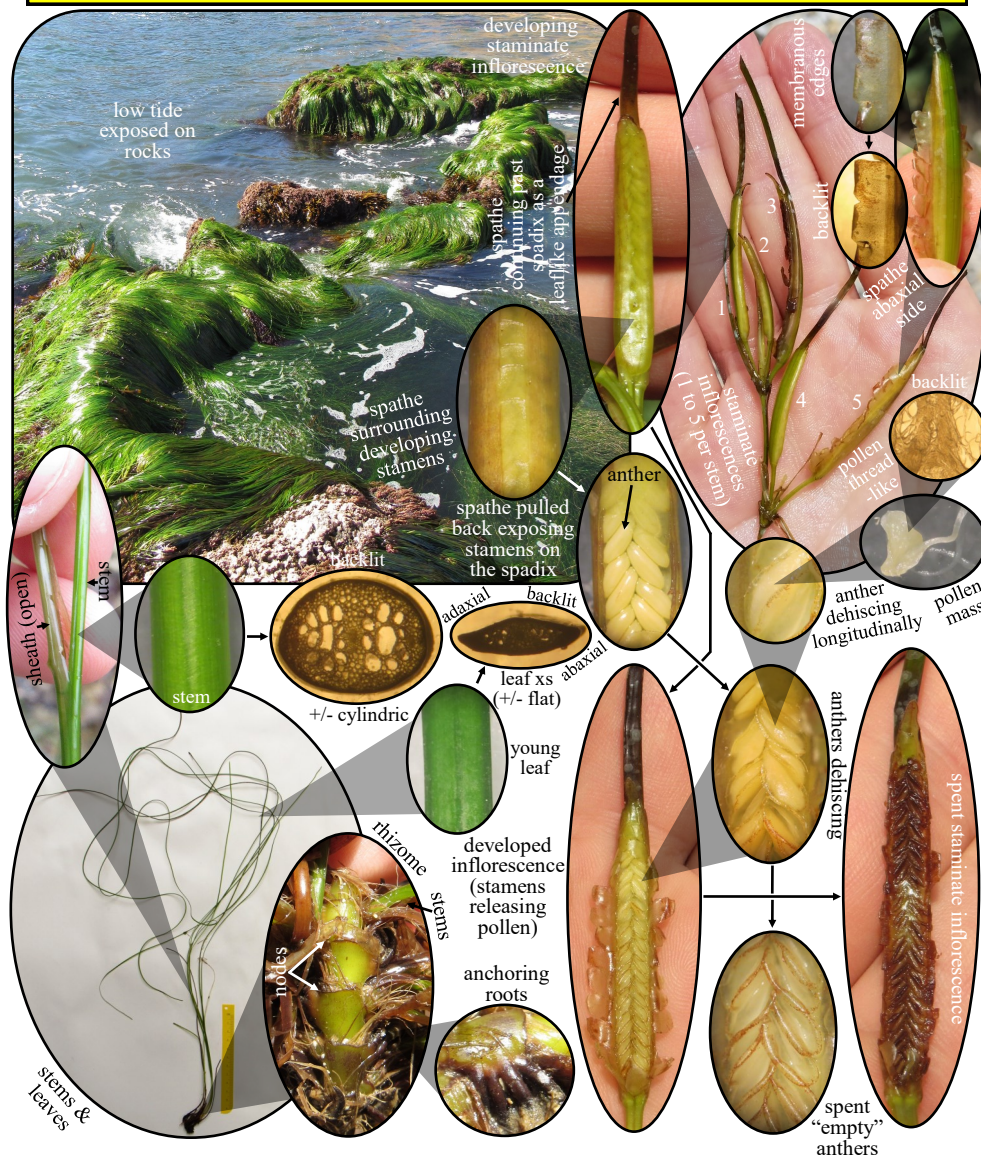
Torrey's Surfgrass (*Phyllospadix torreyi*)

Order: Alismatales

Family: Zosteraceae (Seagrass Family)

Flowers: May - November

Phyllospadix torreyi is a herbaceous perennial plant. It is found throughout the rocky intertidal zone of the peninsula's coast. It is dioecious. It spreads via rhizomes that attach to the rocks. Stems are simple or branched, flat and long. The leaves are grass-like, generally long, 3-veined, thin and have margins that are entire. Leaf sheath is open. The leaves when young are flat and with age they become folded or cylindric. The inflorescences are located near the end of the flowering stems and are made up of



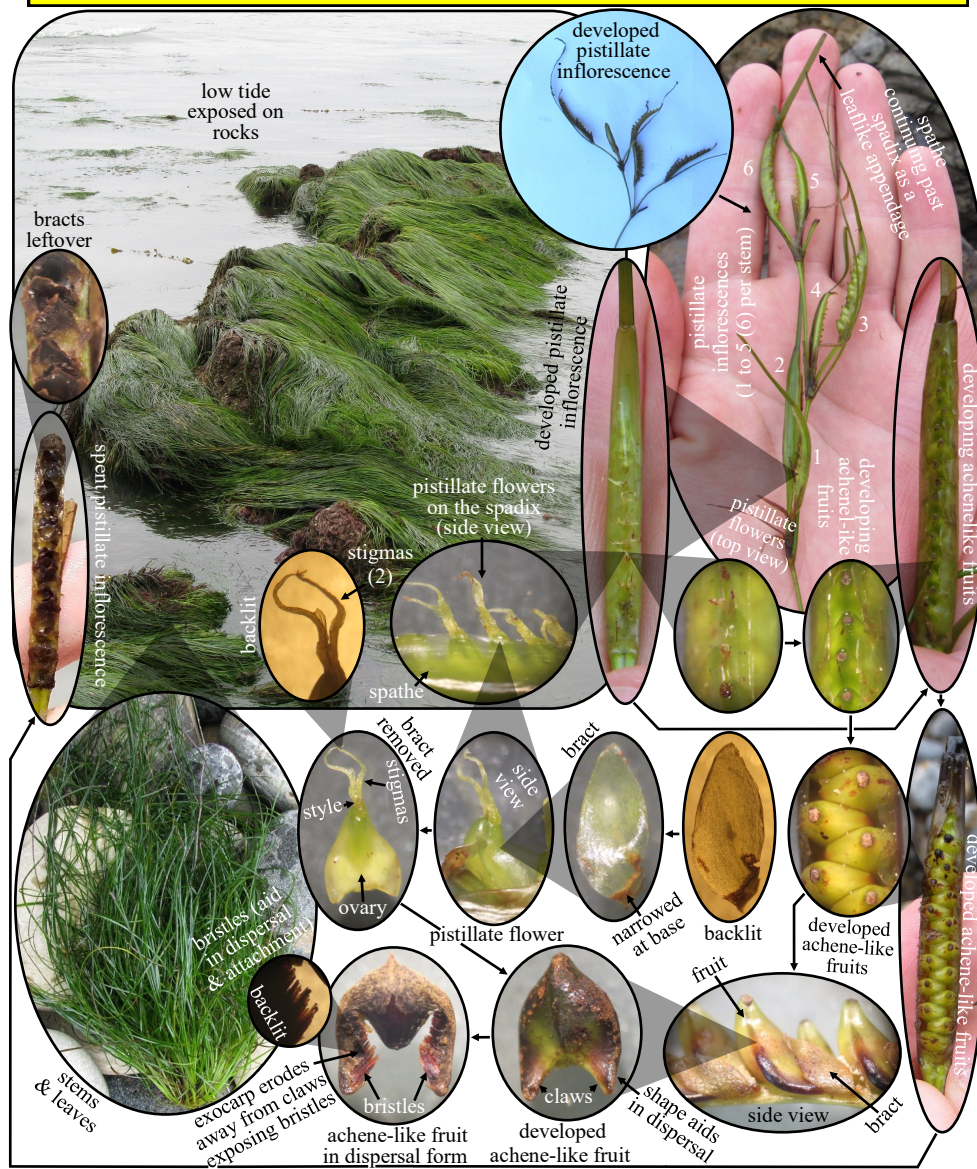
Torrey's Surfgrass (*Phyllospadix torreyi*)

Order: Alismatales

Family: Zosteraceae (Seagrass Family)

Flowers: May - November

linear spadices (1 to 5 spadices per flowering stem) that project out from the spathe sheaths when the inflorescences are mature. Spathe sheaths have membranous edges and extend out past the spadices as a leaflike appendage. The staminate and pistillate flowers are apetalous and are subtended by bracts with the pistillate bract being narrowed at the base. The pollen of the staminate flower is filamentous. Pistillate flowers have a single pistil with 2 stigmas. The fruit is achene-like and crescent-shaped.



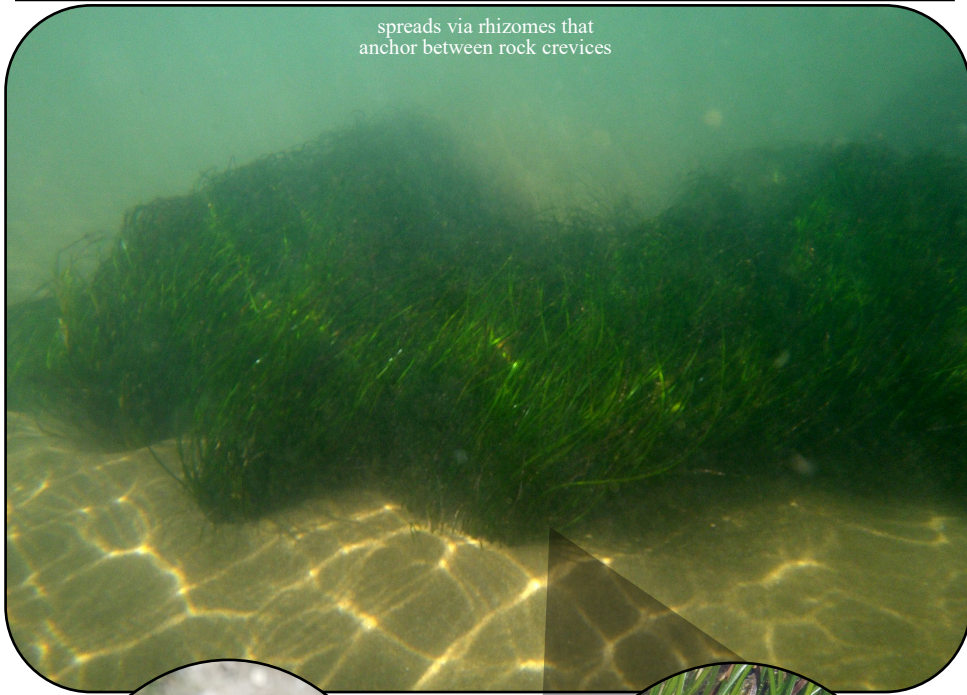
Torrey's Surfgrass (*Phyllospadix torreyi*)

Order: Alismatales

Family: Zosteraceae (Seagrass Family)

Flowers: May - November

spreads via rhizomes that
anchor between rock crevices



rhizomes firmly
lodged in rock
crevices