

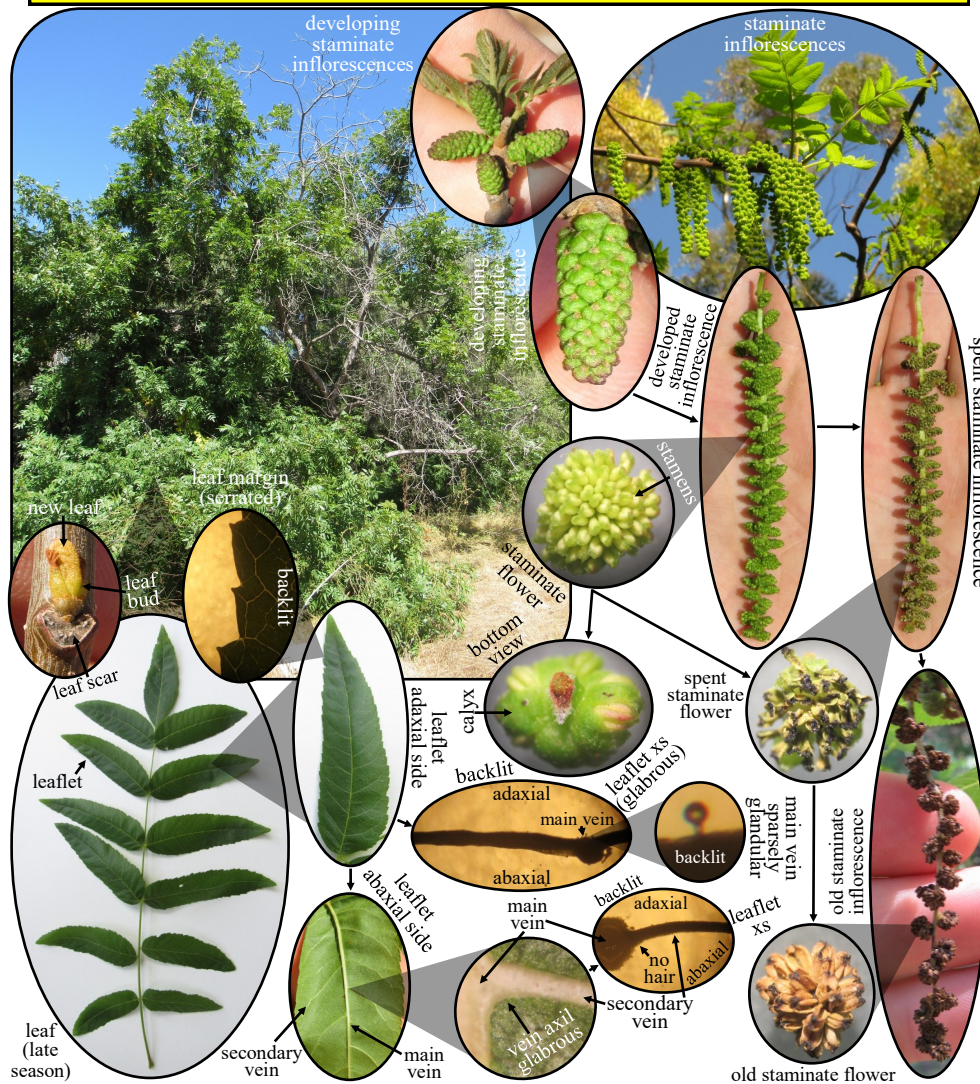
## Southern Black Walnut (*Juglans californica*)

**Order: Fagales**

**Family:** Juglandaceae (Walnut Family)

**Flowers:** March - May

*Juglans californica* is a perennial shrub to medium tree. It is found in only a few locations on the peninsula (mostly along canyons). It is a winter deciduous plant. The leaves are made up of 11 to 15 (sometimes 9 or 17) leaflets that are usually narrowly oblong-elliptic to lance-elliptic (sometimes lanceolate). The tips of the leaflet are rounded to acute. The margins of the leaflets are finely serrated. The adaxial and abaxial side of the leaflet is glabrous; however, the main vein of the leaflet can sometimes be glandular. In addition, the vein axils on the abaxial side of the leaflets do not have tufts of hair (check for this on late season leaves). The staminate flowers are contained within catkins. The staminate flowers have a calyx with 4 lobes (sometimes



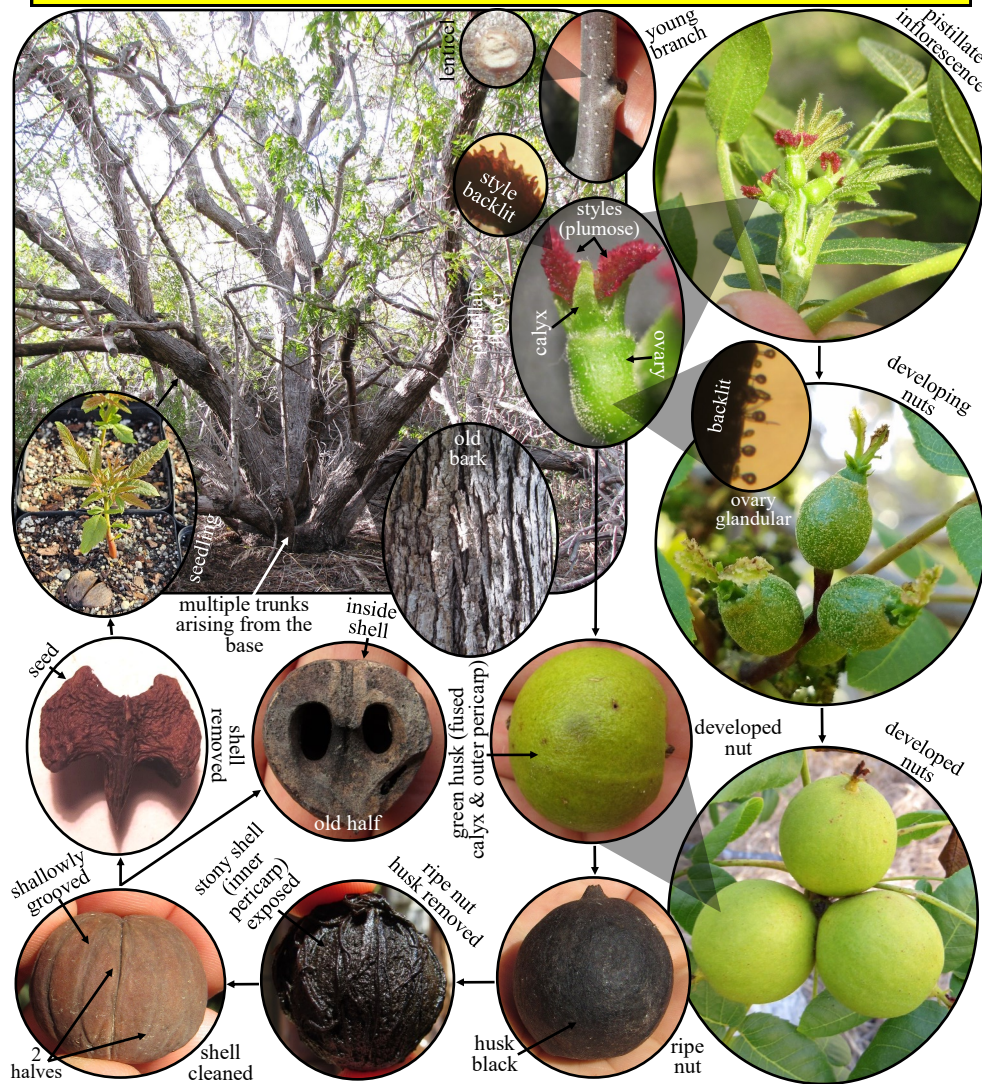
## Southern Black Walnut (*Juglans californica*)

**Order: Fagales**

**Family:** Juglandaceae (Walnut Family)

**Flowers:** March - May

2 or 6 lobes), no corolla, 15 to 35 stamens and no pistil present. The pistillate flowers are solitary and erect. For each pistillate inflorescence (located at the tips of new twigs), there can be 1 to 3 flowers present. The pistillate flowers have a calyx with 4 lobes, no corolla, no stamens, 1 ovary with 2 styles that are plumose and reddish purple. The fruit is a nut (unwinged) enclosed in a leathery husk (fused calyx and outer pericarp) that is indehiscent. The shell (inner pericarp) of the nut is thick, shallowly grooved and contains the seed. Older bark becomes greatly furrowed with age and takes on a grayish-brown color. The plant tends to have multiple trunks arising from the base. It is an endemic to California.





## **Southern Black Walnut** (*Juglans californica*)

**Order:** Fagales

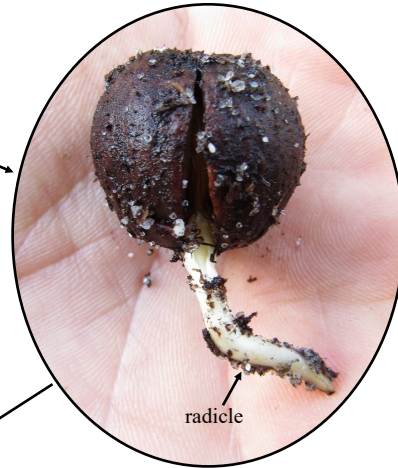
**Family:** Juglandaceae (Walnut Family)

**Flowers:** March - May

germination of nut



nut cracks and radicle emerges



first shoot is second to emerge



fully emerged seedling



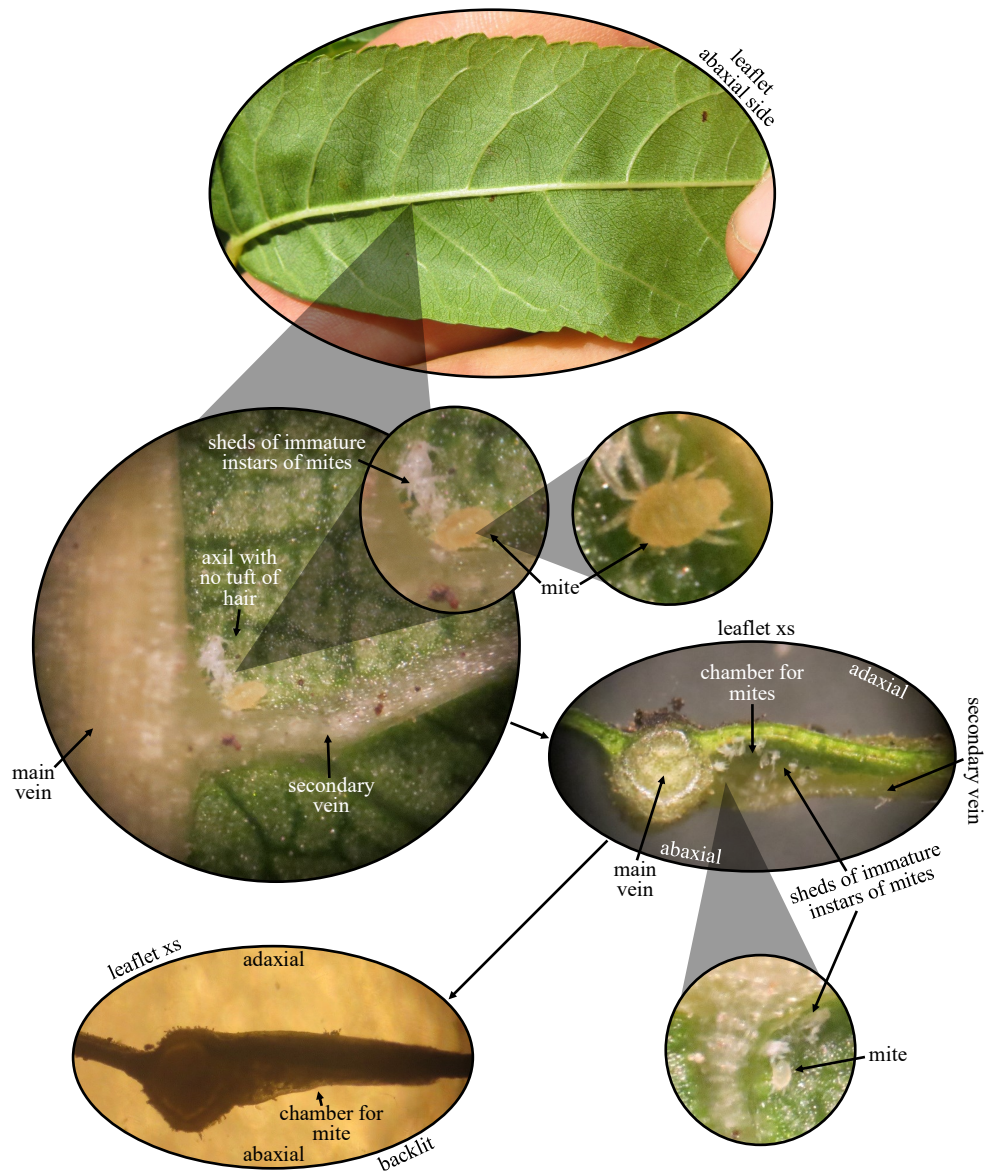
## Southern CA Black Walnut (*Juglans californica*)

Order: Fagales

Family: Juglandaceae (Walnut Family)

Flowers: March - May

For the *Juglans californica* on the peninsula, leaf domatia are present and scattered throughout the abaxial side of the leaflets in the vein axils. The domatia appear to house mites.





# Northern CA Black Walnut (*Juglans hindsii*)

**Order:** Fagales

**Family:** Juglandaceae (Walnut Family)

**Flowers:** April - May

*Juglans hindsii* is a perennial tree. It is found scattered throughout the peninsula and has been introduced via use as a rootstock for grafting of *J. regia* (which is also present on the peninsula and very numerous throughout the residential areas). On the abaxial side of the leaflets there are tufts of hair present in the vein axils.

